

WESTORIA



740 SAGEWOOD CT., GOSHEN, IN



## CUSTOM MAYFIELD FEATURES

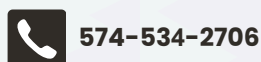
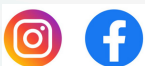
- Zero clearance entry
- Andersen windows
- Therma-tru fiberglass front door
- 9ft Ceilings on the 1st Floor
- 11ft ceiling in the Foyer
- Finished basement with rec. room, bed, and full bath
- Quartz Countertops
- Vinyl Shakes with brick accent exterior
- Maintenance free lawn and landscaping
- Large Covered front porch
- Ceramic shower in Master Bath

|                         |               |
|-------------------------|---------------|
| HOME PRICE:             | \$ 421,523.00 |
| FINISHED BASEMENT:      | \$ 36,963.00  |
| LOT 12 PRICE:           | \$ 59,000.00  |
| LANDSCAPE & IRRIGATION: | \$ 15,000.00  |
| TOTAL HOME PRICE:       | \$ 533,386.00 |

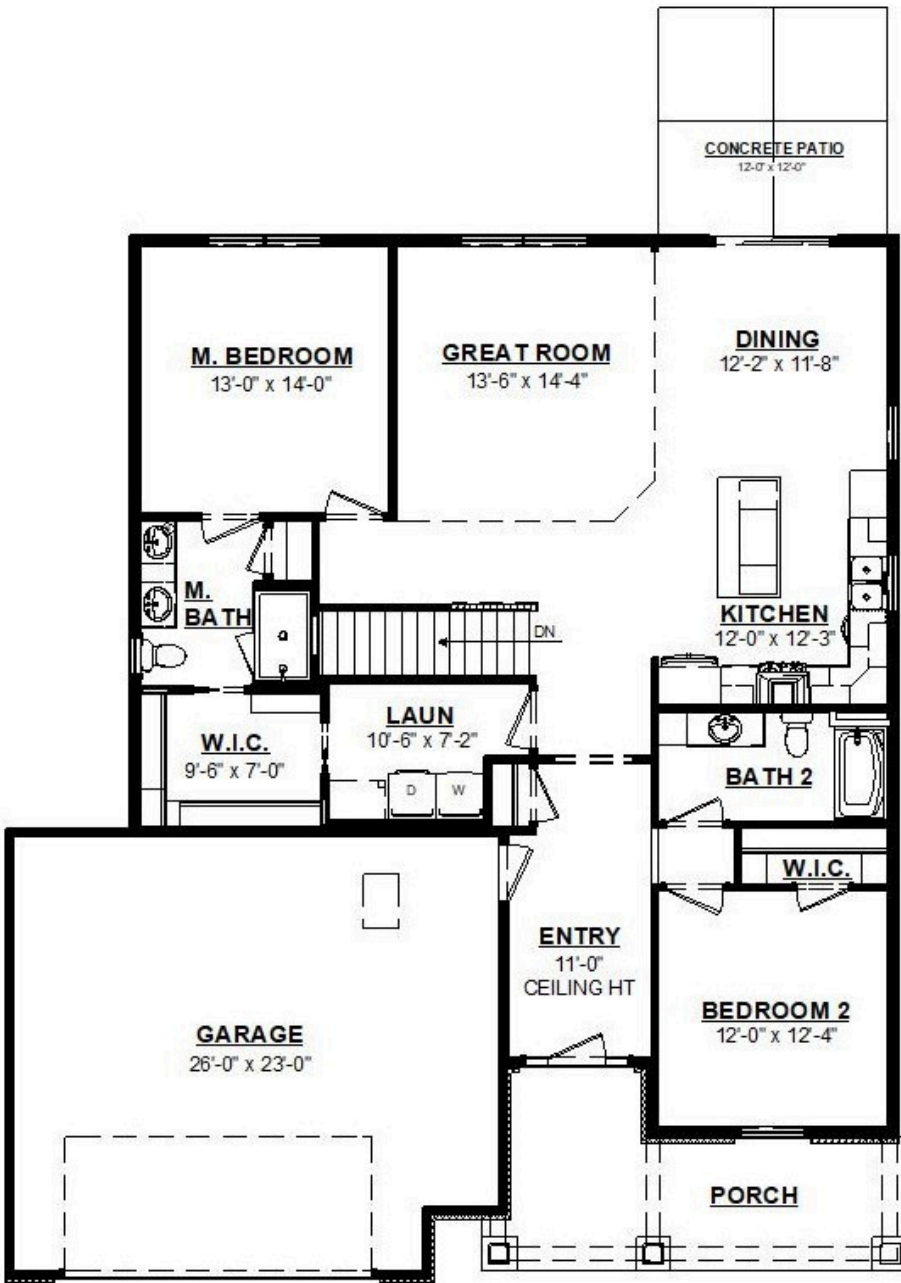


DESIGN AND QUALITY - A TRADITION

## CONTACT US

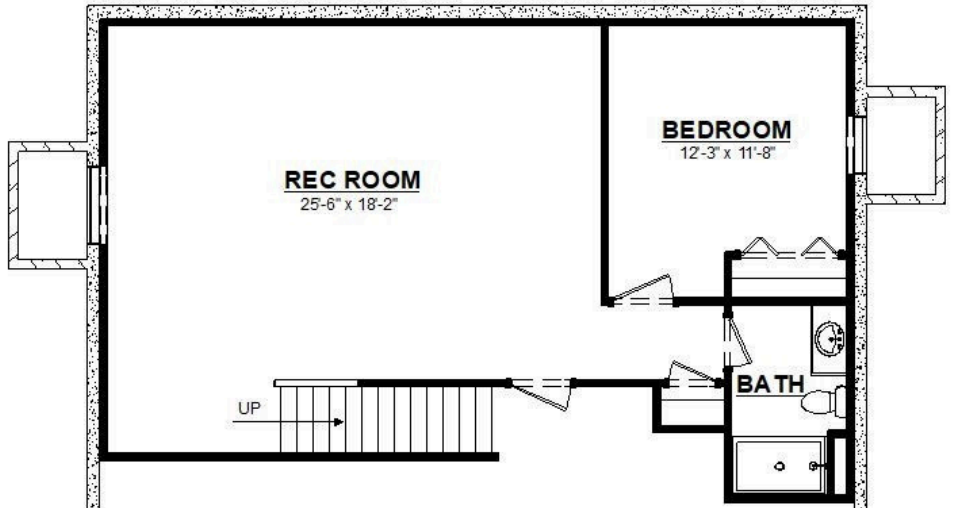


1st Floor: 1,550 sq.ft.  
 Basement: 820 sq.ft.  
 Total Finished: 2,370 sq.ft.  
 Garage: 583 sq.ft.



**1ST FLOOR**

**BASEMENT**



SCHROCKHOMES.COM



574-534-2706



2523 MESSICK DRIVE | GOSHEN, IN